



*Elite Simulation Solutions AG  
im Schoerli 1  
CH-8600 Duebendorf  
Switzerland*

*Tel. +41 (0) 43 355 1920  
Fax. +41 (0) 43 355 1921  
[info@flyelite.ch](mailto:info@flyelite.ch)  
[www.flyelite.ch](http://www.flyelite.ch)*

# ELITE MFS2020 Hardware Driver

Project: ELITE MFS2020 Hardware Driver

21 January 2021

Author: ELITE Simulation Solutions AG

Created: 22 December 2020

#### Changes

Updated by	Date	Change	Remarks
PD	22.12.2020	Created	

## Contents

1	ELITE MFS2020 hardware driver .....	4
1.1	Preface .....	4
1.2	Prerequisites .....	4
1.3	Installation .....	4
1.3.1	ELITE application for MSFS2020 .....	5
1.4	First use preparation .....	18
1.5	Starting MSFS 2020, FSUIPC and the ELITE MSFS 2020 Application .....	19

## 1 ELITE MFS2020 hardware driver

### 1.1 Preface

The ELITE Application for MSFS 2020 was created to allow for the use of ELITE-brand serial and USB flight simulation hardware products with Microsoft Flight Simulator 2020. In this manual the name Microsoft Flight Simulator 2020 is abbreviated to MSFS 2020.

This manual will guide you through the installation of the application, and help you to understand its different functions for properly configuring your hardware.

The following USB or Serial hardware can be used with the ELITE FS plugin:

- ELITE Pro Panel III
- ELITE Pro Panel II
- ELITE Pro Panel SE
- ELITE Rudder Pedals
- ELITE AP1000 Avionics Panel
- ELITE AP2000 Avionics Panel
- ELITE AP3000 Avionics Panel
- ELITE AP4000 Avionics Panel
- ELITE AP4000 Avionics modules\*
- ELITE MEL Standalone Throttle Quadrant
- ELITE SEL Standalone Throttle Quadrant
- ELITE King Air Standalone Throttle Quadrant
- ELITE SEL, MEL, and King Air Console Throttle Quadrants
- ELITE 2-lever and 3-lever Vernier ECUs for Consoles

\*The ELITE GNS 430 and 530 modules are compatible with Microsoft Flight Simulator 2004 and X only.

### 1.2 Prerequisites

- FS2020 must already be installed, activated and started at least once
- The installer and driver are only supported on systems with Windows 10 version 2004 or newer (FS2020 requires Windows 10 2004 or newer).

### 1.3 Installation

The ELITE Application for MSFS 2020 uses the FSUIPC7 application to communicate with MSFS 2020. It is required to install the FSUIPC7 application on the same computer as MSFS2020 and the ELITE Application for MSFS 2020.

The application consists of an executable called ELITEHardwareFS2020\_App.exe, a DLL called ELITEHardware\_x64.dll, a configuration file called ELITEHardwareBugState.ini, this documentation and a directory

called ELITE (contains a DLL called EliteFSXUSB\_x64.dll), which are all located in the same root directory. There is no specific requirement for the location of this application in the file system, it can be installed where it is most convenient for the user.

The installer will install the following applications on your computer:

- ELITE FTDI driver for USB communication
- FSUIPC v7.0.2
- Microsoft redistributable packages:
  - VC\_redist.x64\_2015\_2017\_2019
  - VC\_redist.x86\_2015\_2017\_2019
  - vcredist\_x64\_2013
  - vcredist\_x86\_2013

### 1.3.1 ELITE application for MSFS2020

Download the installer “ELITEFS2020HardwareDriverSetup.zip” from the Flyelite.ch website:

<http://www.flyelite.ch/en/knowledge-base/plugin-ins-drivers/>

- Double click on the file ELITEFS2020HardwareDriverSetup.exe to start the installation.
- Click “Next” on the welcome screen:

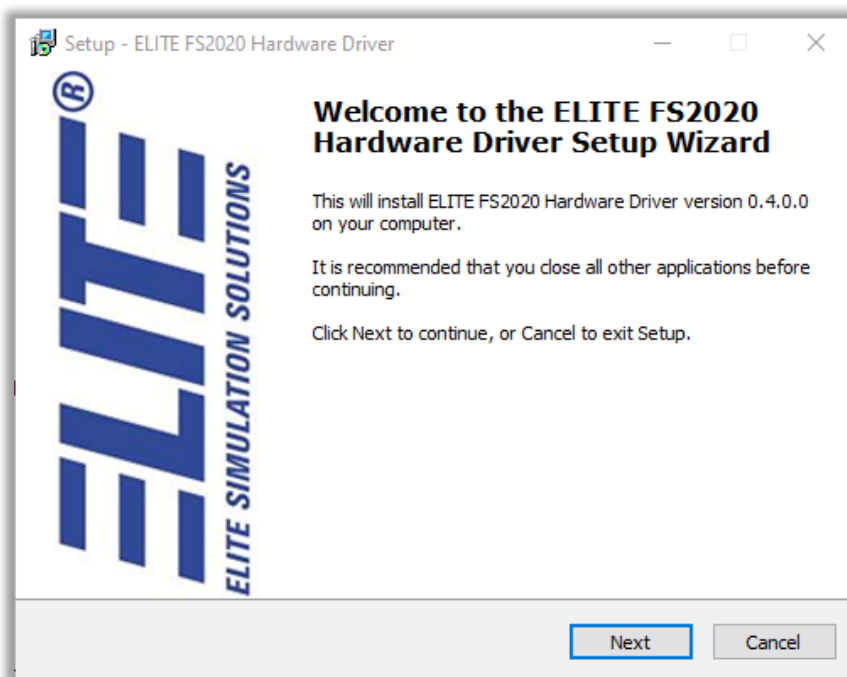


Figure 1 Welcome screen

- Accept the license agreement and click “Next” to continue:

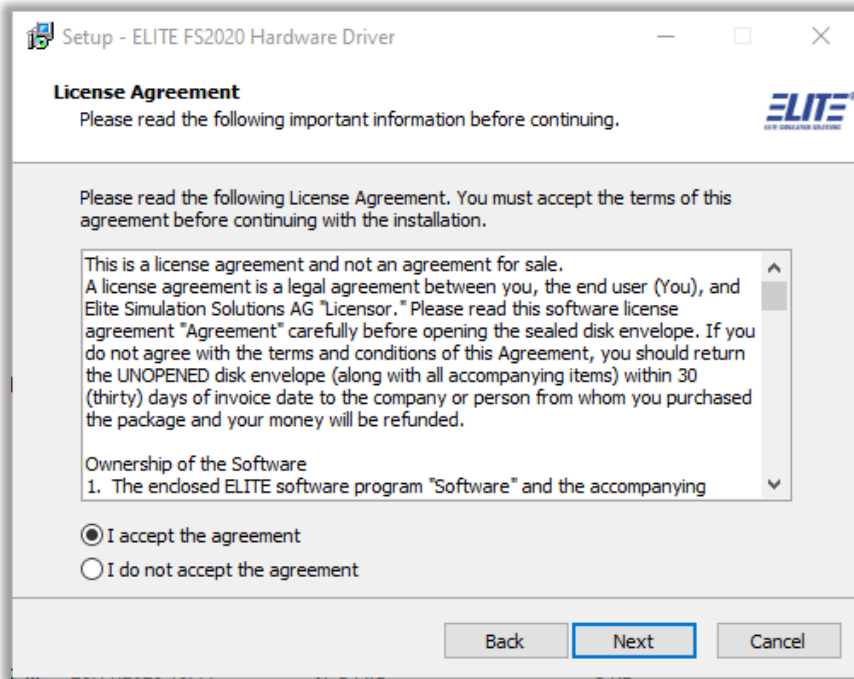


Figure 2 License agreement

- Select the location where the application shall be installed and click on “Next”:

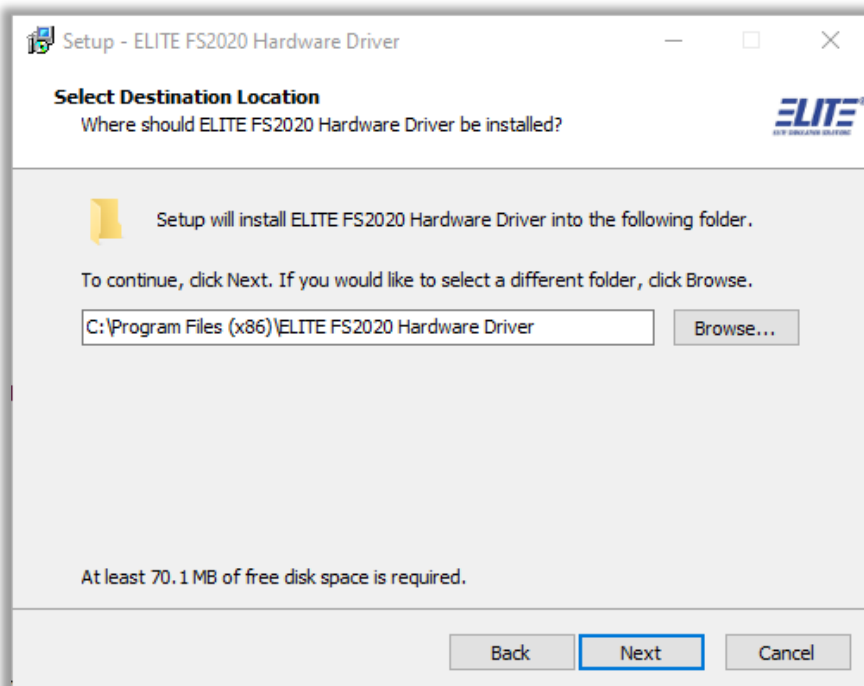


Figure 3 Installation directory selection

- Select the start menu folder and click on “Next”:

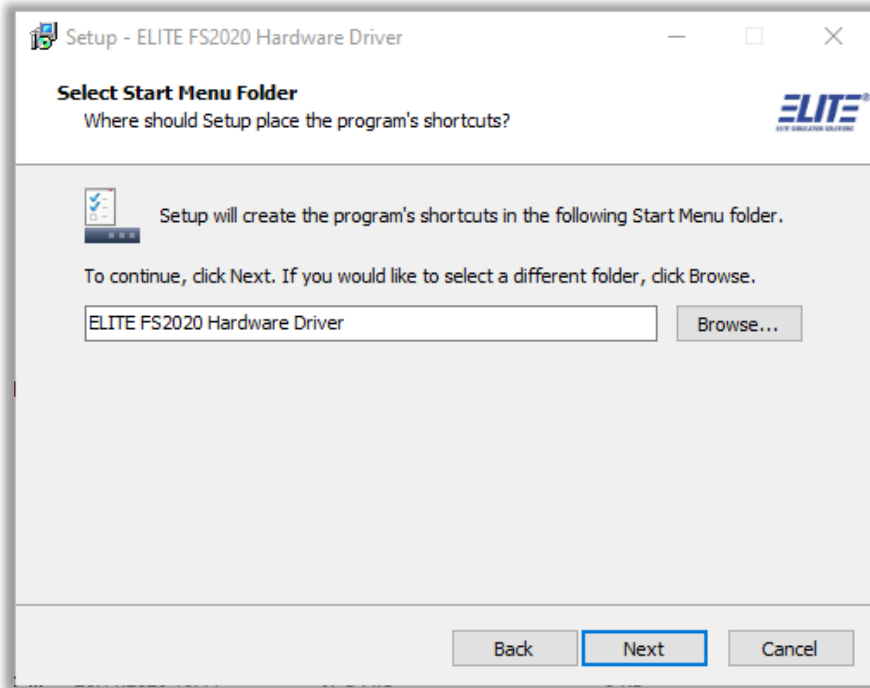


Figure 4 Start menu folder selection

- Select the components to install. If you already have FSUIPC v 7.0.2 or higher installed, you can de-select FSUIPC. If FSUIPC is already installed and the selection is not removed, it will simply run the regular FSUIPC installer, which will uninstall a version already installed and install version v7.0.2 shipped with the ELITE FS2020 hardware installer.  
The Microsoft redistributable packages are required for the driver to work, thus only de-select them if you are sure they are already installed on your machine.

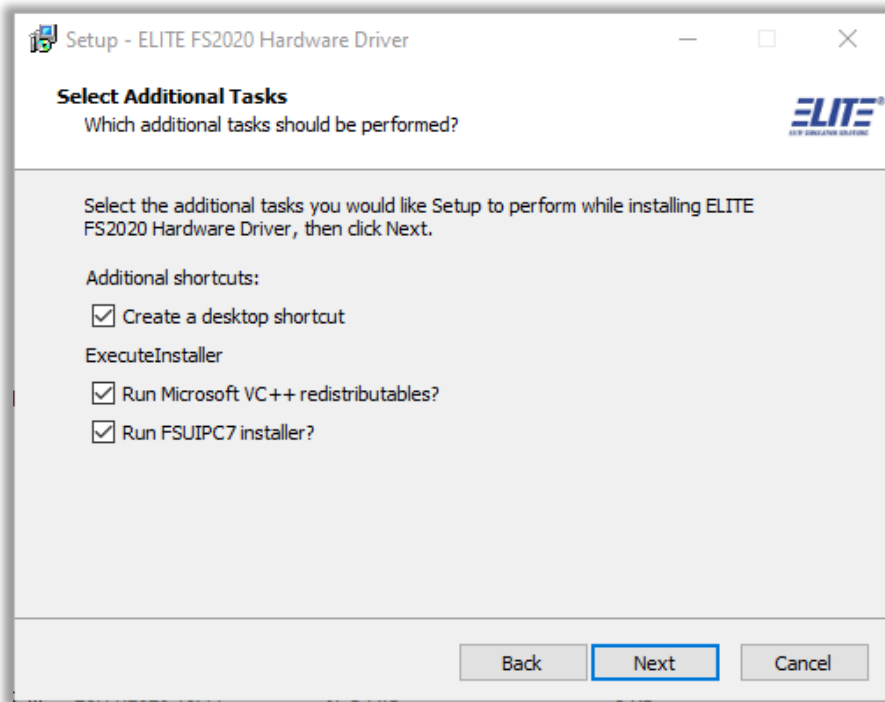


Figure 5 Component selection

- Check the installation summary and click on “Install” to begin the installation:

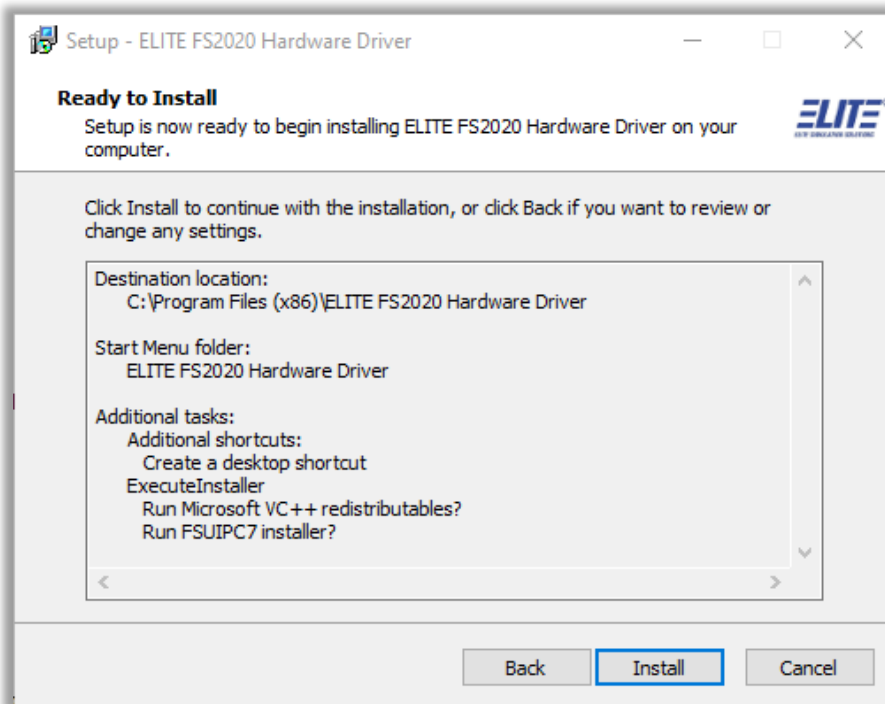


Figure 6 Installation summary



- The files will be copied to the directory selected in one of the previous steps. After having copied the files, the single installation packages are executed:

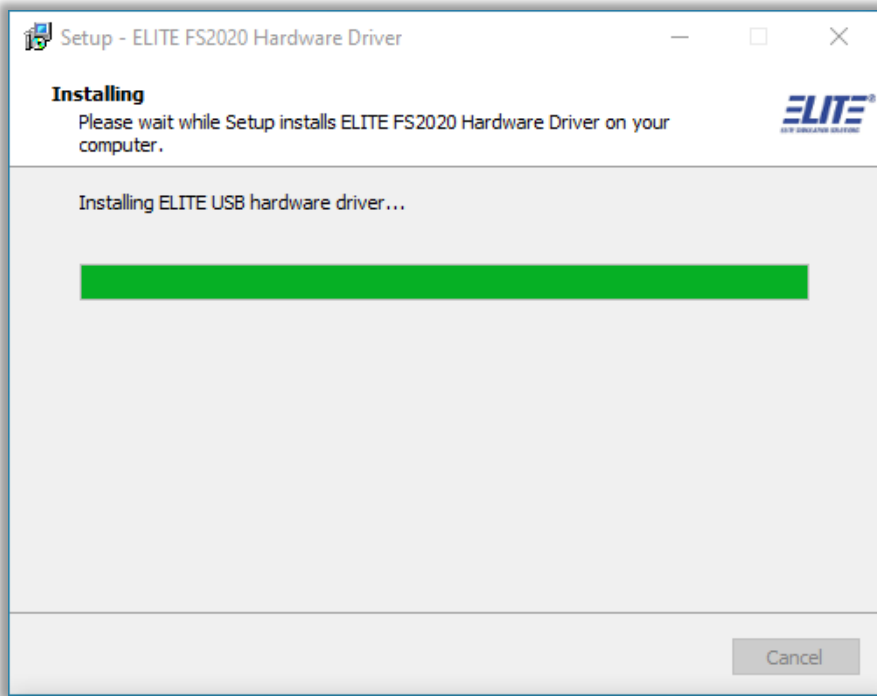


Figure 7 File copy process

- The first package installed is the ELITE USB hardware driver. Click on “Next” to continue:



Figure 8 ELITE USB hardware driver installation

- Accept the license agreement and click on “Next”:

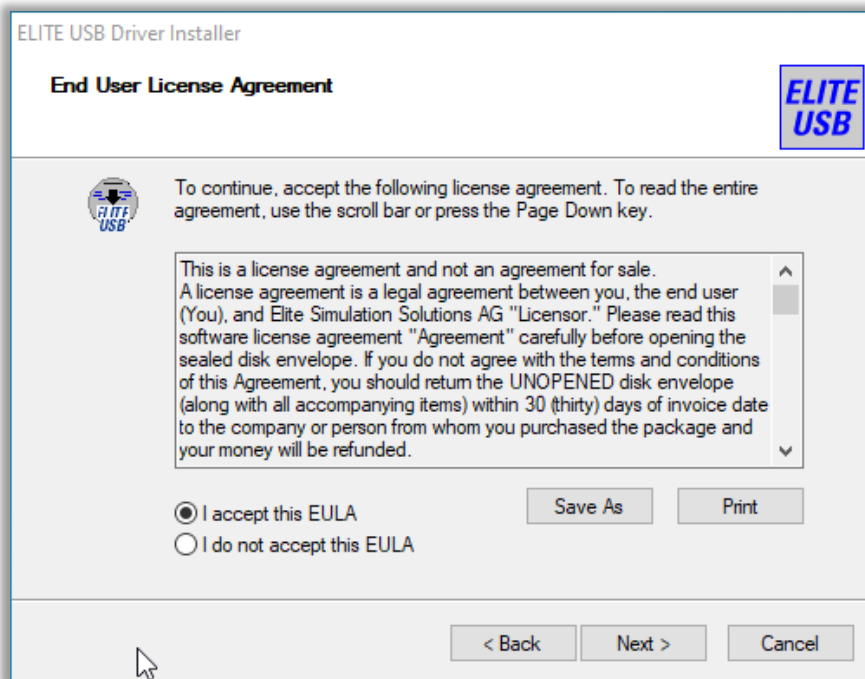


Figure 9 License agreement

If there is already a previous version of the driver installed, the following window will be shown. In this case, just click “Yes” to override a previous installation:

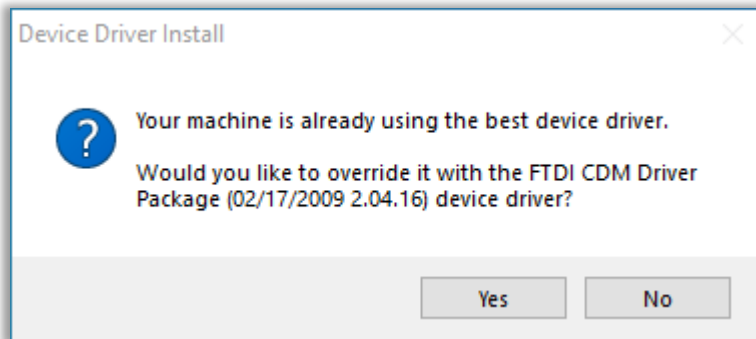
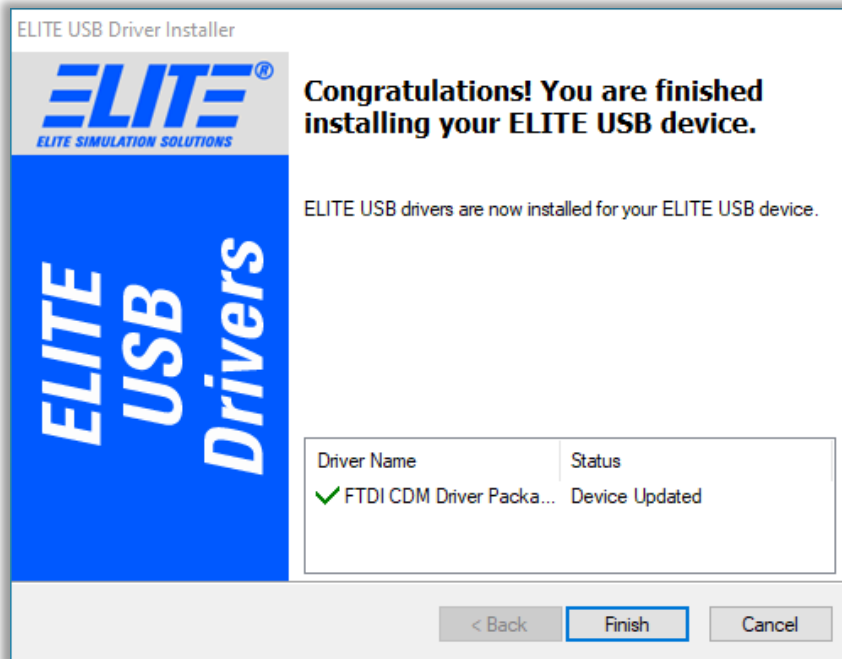


Figure 10 Driver already installed

- Click on “Finish” on the next screen:



- The next package which will be installed is FSUIPC7. If you already have a FSUIPC version installed, the following message will be shown. Just click on “OK” to confirm.

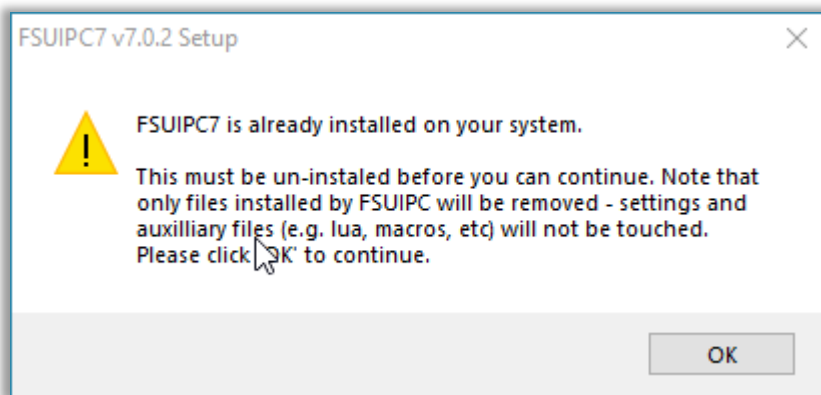


Figure 11 FSUIPC already installed message

- The FSUIPC installer will uninstall a previously installed version and install the version shipped with the ELITE MFS2020 hardware driver. If you don't want to uninstall an existing FSUIPC version, click on “Cancel”.
- If you uninstalled a previous version or no FSUIPC version was installed yet, the regulad FSUIPC installer is started. Click “Next” on the following screen:



Figure 12 FSUIPC welcome screen

- Accept the end user license agreement by clicking on the “I agree” button:



Figure 13 License agreement

- Select the items to install and click on “Next”:

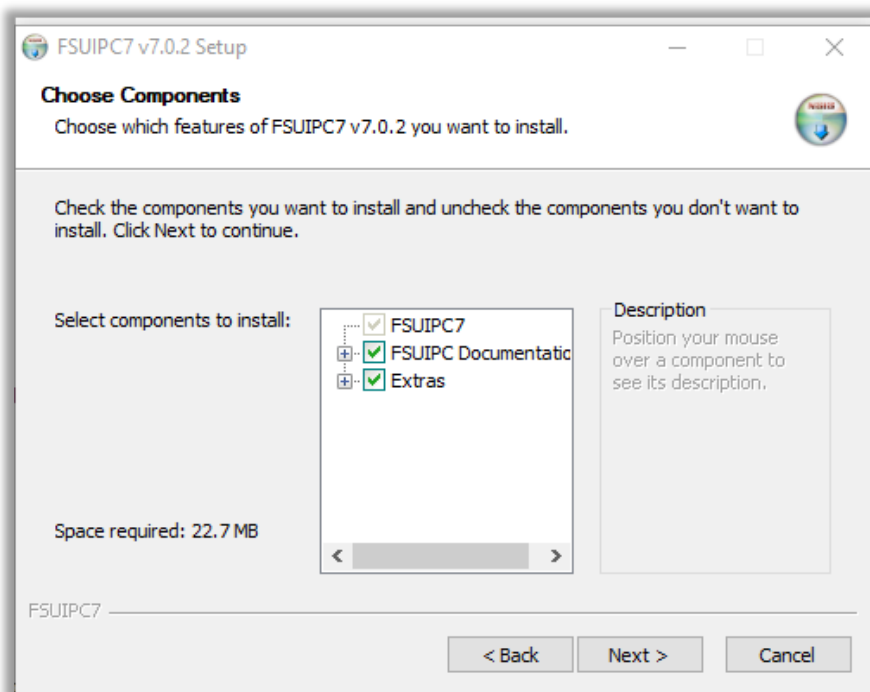


Figure 14 Component selection

- Select the destination directory (the example below shows “D:\Programs\FSUIPC7”, but you can select any directory you want) and click on “Install”:

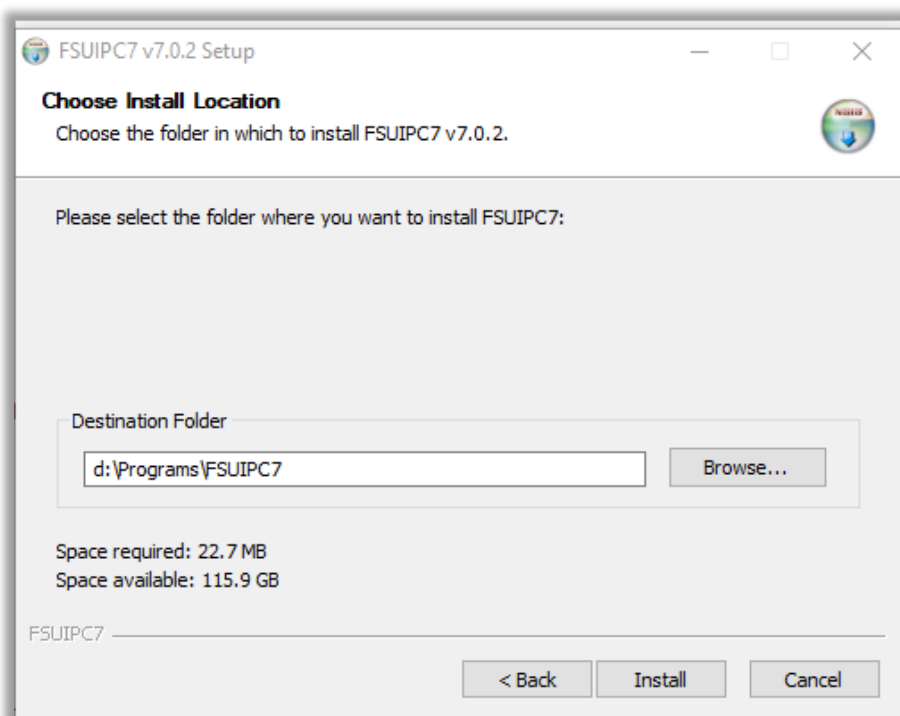
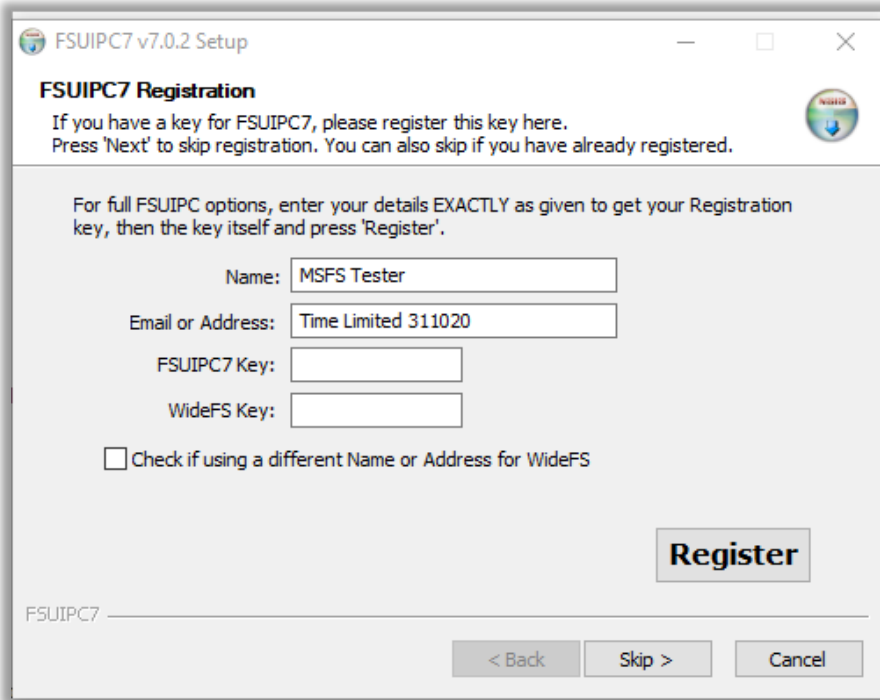


Figure 15 Installation directory selection

- The files will be copied. Once this is done, you will be presented the FSUIPC registration form. Enter your registration data if you have a license, otherwise click on “Skip>”:



The image shows a Windows-style registration window titled "FSUIPC7 v7.0.2 Setup". The window has a standard title bar with minimize, maximize, and close buttons. The main content area is titled "FSUIPC7 Registration" and contains the following text: "If you have a key for FSUIPC7, please register this key here. Press 'Next' to skip registration. You can also skip if you have already registered." Below this, there is a paragraph: "For full FSUIPC options, enter your details EXACTLY as given to get your Registration key, then the key itself and press 'Register'." The form includes several input fields: "Name:" with the text "MSFS Tester", "Email or Address:" with the text "Time Limited 311020", "FSUIPC7 Key:" (empty), and "WideFS Key:" (empty). There is a checkbox labeled "Check if using a different Name or Address for WideFS" which is currently unchecked. A large "Register" button is positioned to the right of the input fields. At the bottom of the window, there is a status bar with the text "FSUIPC7" and three buttons: "< Back", "Skip >", and "Cancel".

Figure 16 FSUIPC7 registration form

- Now you can select to create a desktop shortcut to start MSFS together with FSUIPC. Selecting this option will make the MSFS startup much easier. Click on “Finish” when done.

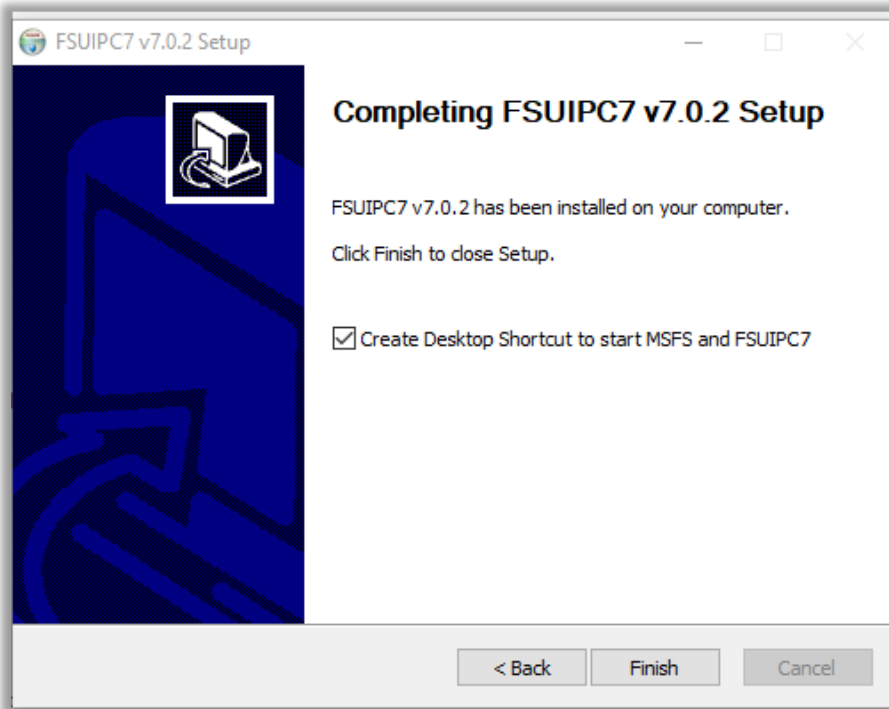


Figure 17 FSUIPC desktop shortcut

- The next steps will install the Microsoft redistributable packages. Depending on the package version a different message will be displayed if the package is already installed. E.g the “Microsoft Visual C++ 2013” installer will show the following message if it finds an already installed version. Click on “Repair” or “Close” to proceed:

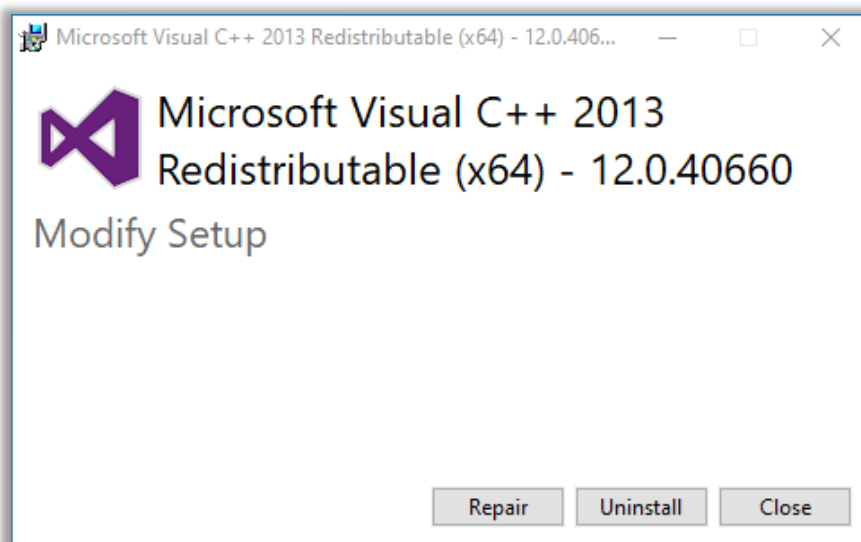
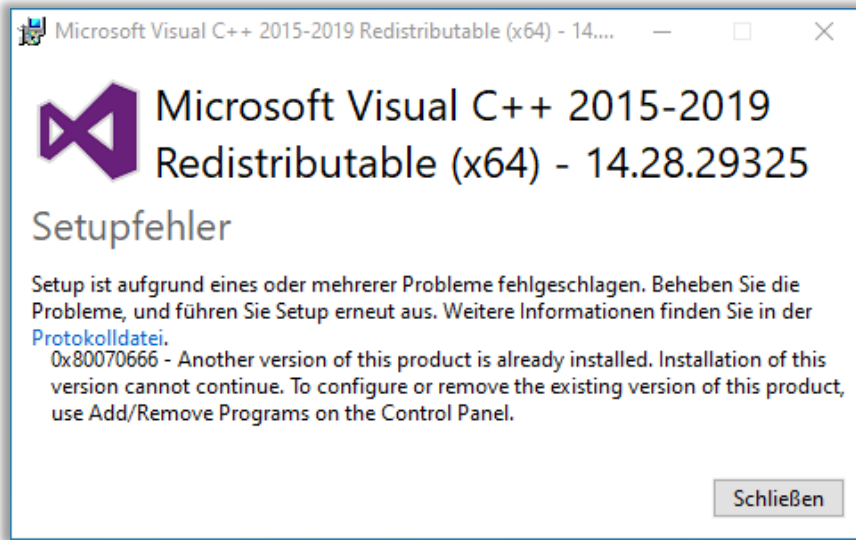


Figure 18 VC++ 2013 message

- The VC++ 2015-2019 will show a different message if it is already installed. Just click on “Close” (Schliessen) in this case:



- If the package is not already installed, accept the license agreement and click on “Install”:

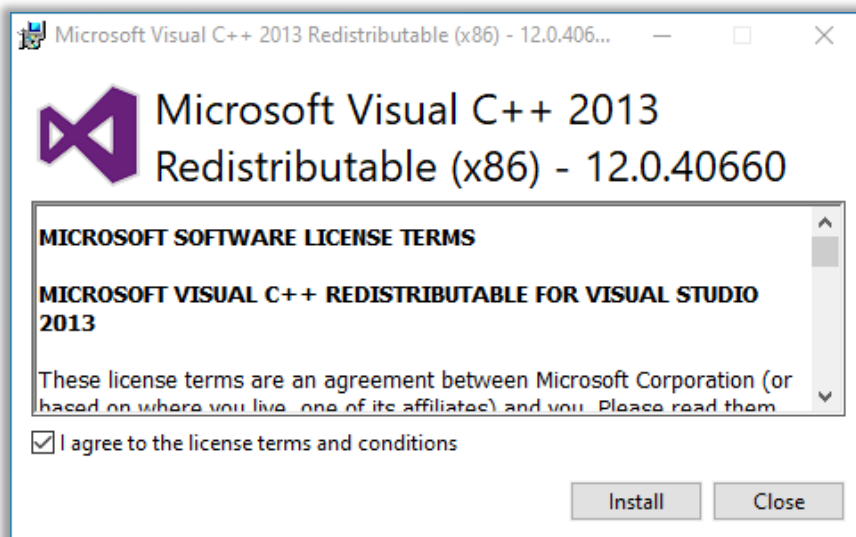
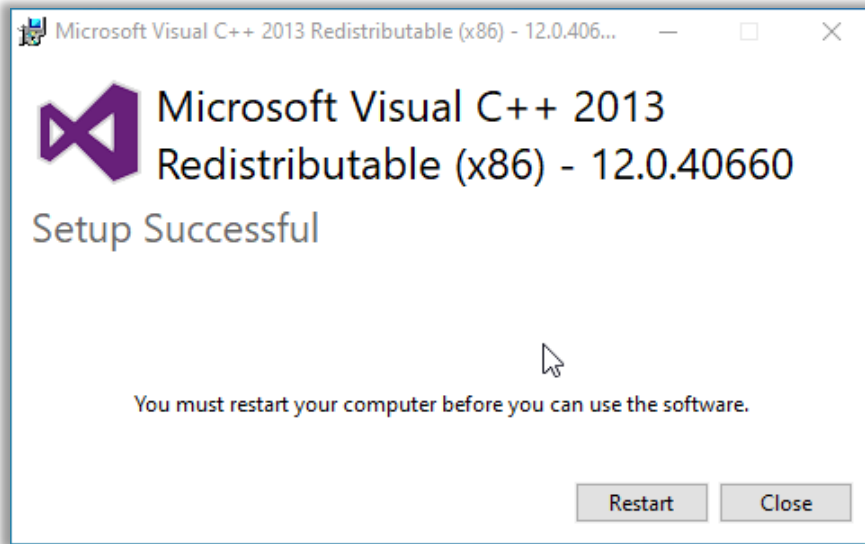


Figure 19 VC++ package installation

- Once the package is installed, the following message is shown:





Do not click on restart yet if the message is displayed for the VC++ 2013 package, as the installer is not done yet. If you click on "Restart" at this stage, you will have to run the complete installer again after reboot to install the remaining components.

Install all the VC++ redistributable packages.

- Once the installation is finished, the "Restart your computer" option will be displayed, depending on the items which have been installed:

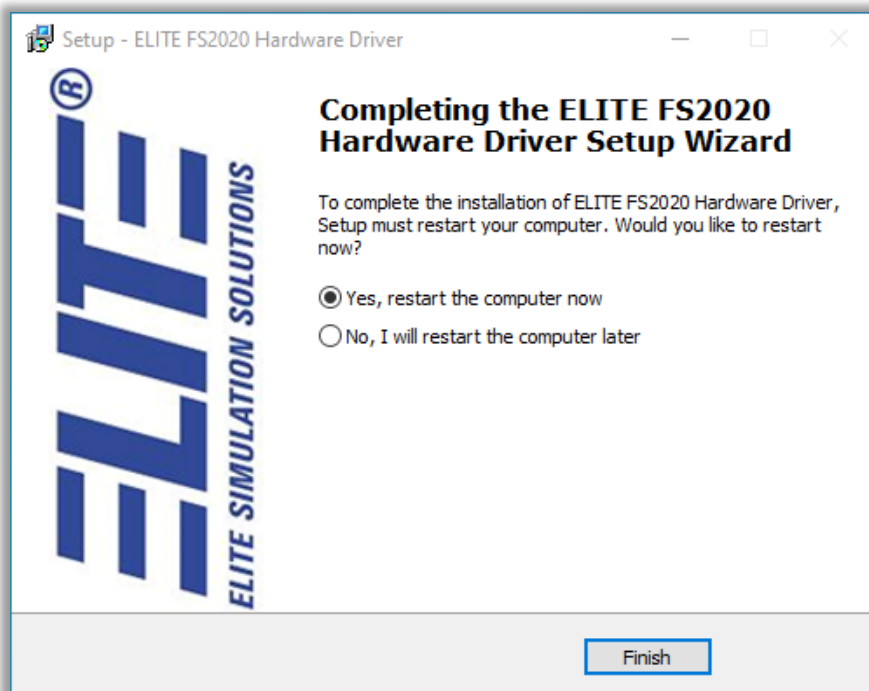


Figure 20 Installation complete

- If some of the components were already installed, a restart is not required, and the following screen is shown:

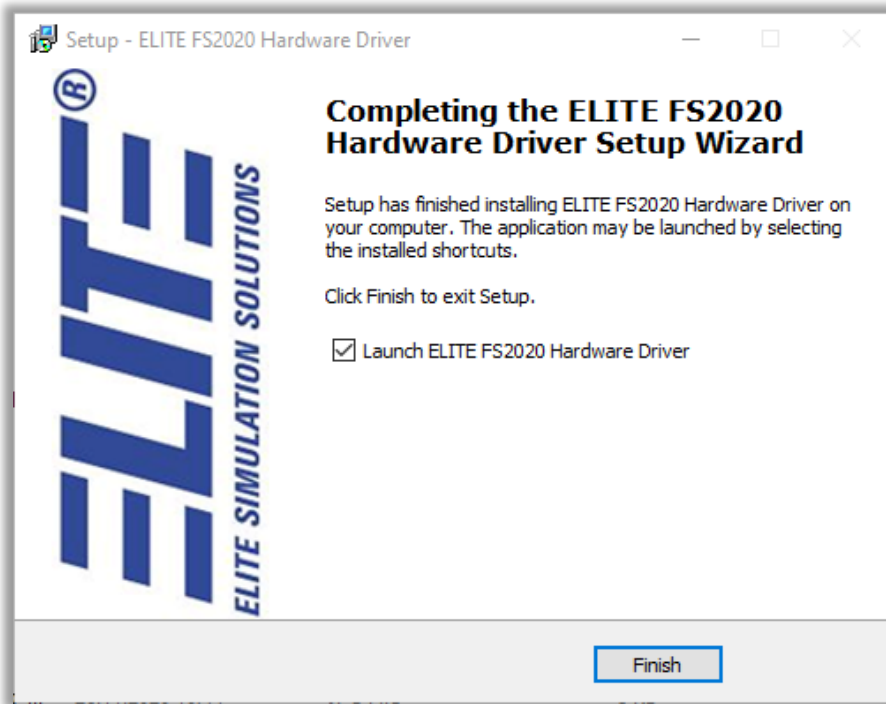
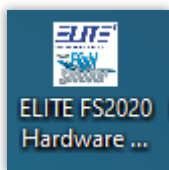


Figure 21 ELITE installation completion dialog

Restarting the computer after installing a new software is always a good idea, regardless if the installer asks for a reboot or not.

A new shortcut icon will have been created on your desktop, if you told the installer to do so:



#### 1.4 First use preparation

Before you start MSFS 2020 after installing the ELITE Application for MSFS 2020, you will need to connect your ELITE flight simulation hardware to the computer, and turn it on (if necessary). If you have USB-based products and you just installed the ELITE USB drivers, it may take a few moments for Windows to finish configuring your devices once you plug in the hardware. If you have older Serial hardware, connect it now to the Serial port on your computer. If your computer does not have a Serial port, you can utilize a USB-to-Serial adapter to add a Serial port to your computer. (If you need help with setting up configurations with multiple ELITE Serial devices, consult our older Hardware Installation Manual documents under the Support section of our website, [www.flyelite.com](http://www.flyelite.com). The documents contain easy-to-follow illustrations of multiple different configurations which had been offered by ELITE.)

The FSUIPC installer offers the option to create a desktop shortcut which automatically starts FS2020 and FSUIPC. FSUIPC also offers the option to start third party applications automatically when starting FSUIPC. It is a good idea to add the ELITE MFS2020 application executable to the programs started by FSUIPC. To do so, FSUIPC must have been started at least once as to create the FSUIPC.ini file. Once this file is created, you can edit the file and add the following lines at the end:

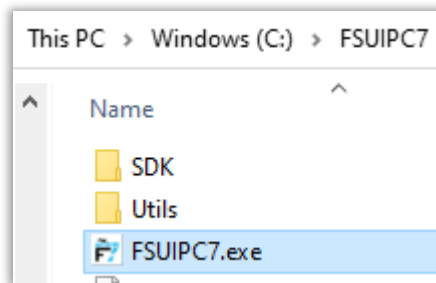
```
[Programs]
Run1=CLOSE,"C:\Program Files (x86)\ELITE FS2020 Hardware
Driver\FS2020_ELITE_Driver_0.4\ELITEHardwareFS2020_App.exe"
```

Adapt the ELITEHardwareFS2020\_App.exe directory according to your selection.

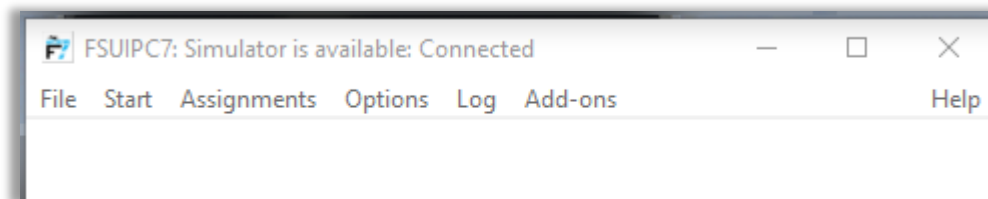
Check the manual "FSUIPC7 for Advanced Users" for more details on possible options.

## 1.5 Starting MSFS 2020, FSUIPC and the ELITE MSFS 2020 Application

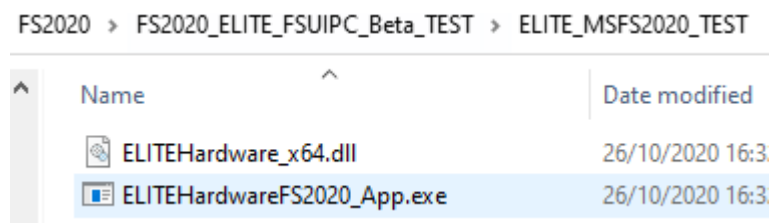
To start FSUIPC7 click on the shortcut created by the FSUIPC installer:



After you have clicked on the FSUIPC7.exe file, an application window should pop up and show a text that says: "FSUIPC7: Simulator is available: Connected".



To start the ELITE Application for MSFS 2020 click on the executable file ELITEHardwareFS2020\_App.exe in the root directory of the application.



After you have clicked on the ELITEHardwareFS2020\_App.exe file an application window should pop up that looks like the one in the image below.



Click on the START button. This will start the data communication between the ELITE hardware and MSFS 2020 via FSUIPC7 and enable the CONFIGURATION button in the application window. A click on the CLOSE button will stop the application and close the window.

